



AUTO DOWNDRAFT BOOTHS

Building your booth the right way for all the right reasons

Environmentally

Safe

Each Auto Downdraft Booth meets safety and code requirements –NFPA-33 and IFC –to protect those that work in any automotive spray environment, and the world outside. Your Auto Downdraft Booth will be designed to

efficiently remove the overspray from the painting operation while maintaining uniform air flow throughout the work area.

Highest Quality Finish

Spray Systems offers three different designs of downdraft booths: a pit-style downdraft, our modified downdraft and a semi-downdraft booth which uses the same trustworthy principle with the choice of above ground exhaust filter locations. Our customers frequently compliment our booths for creating an environment that allows painters to apply the highest quality automotive finishes.

Lower Operating Costs

We use higher efficiency components and designs. We offer energy efficient components from VFD drives, recirculating exhaust systems, high efficiency motors, (T-8) lighting, and booth idle packages resulting in lower operating costs.



PACKAGE FEATURES & BENEFITS

- **CNC and CAD Technology**—booth panels are manufactured of premium 18 gauge G-90 galvanized steel, and are precision-punched on six inch centers, allowing for easy nut and bolt assembly, and exploded view assembly drawings supplied
- **Quiet Exhaust Fan**—typically operates at low dBA noise levels below OSHA limits
- **High Efficiency Motor**—tri voltage, TEFC, motors that match the high efficiency performance of the exhaust fan, three phase with a single phase option
- **Exhaust Filters** – 20" x 25" filters yield a larger filter area, with a specially spun fiber design to remove paint particles efficiently. A manometer to properly manage filter maintenance is included
- **Intake Filters** – these filters, with soft, pliable polyester fibers coated with a special adhesives for superior dust collection, are specifically designed to remove 98% or more of dust particles in order to deliver a Class A finish
- **Lighting** – high efficiency lighting fixtures designed for mounting outside booth, industrial rated, four-tube (T-8) fluorescent fixtures with dust-tight seals and are ETL listed
- **Latches** – heavy duty, quick release type with positive closing and panic hardware
- **Doors/Side Access Door** – both the filter and solid type doors have a structural steel tube frame, leak proof wiper type seals at the bottom and polyfoam seals at the center; side access door meets NFPA Lifeline 101 requirements, and includes an 18" x 36" observation window
- **UL Listed** – all electrical components and latching devices are UL/ETL listed
- **Essential Accessories** – all necessary caulking, nuts and bolts, hardware for proper booth installation

D-2000 Downdraft Paint Booth

Our Pit Style Downdraft Automotive Booth is our premier design and one most sought-after by our customers requiring high-quality finishes. Using a pit-style downdraft design, the air flows over the top of the part, and is pulled down through the filters beneath the floor grating, which is set in a trench or pit. The downdraft air movement creates an ideal environment where the over-spray contamination is drawn into the filtered exhaust pit. The D-2000 utilizes a heated air make-up system which pressurizes the booth. It also has the capa-

bility of providing a bake mode for final cure, which is great for high production shops. The air replacement system for the D-2000 is purchased separately.

SD-1000 Semi-Downdraft Paint Booth

Our Semi-Downdraft Paint Booth, offers the business owner and painter the advantages of downdraft airflow design without the expense of a trench or pit. In the semi-downdraft booth, fresh air is pulled through filters located in the ceiling of the booth, and drawn over the vehicle. The paint overspray is swept back through the filters which are located at the opposite end of the booth near the floor level. This air movement provides the painter with a clean environment for the ideal paint finish. The SD-1000 utilizes a heated air make-up system which pressurizes the booth. It also has the capability of providing a bake mode for final cure, which is great for high production shops. The air replacement system for the SD-1000 is purchased separately.



MD-1000 Modified Downdraft Paint Booth

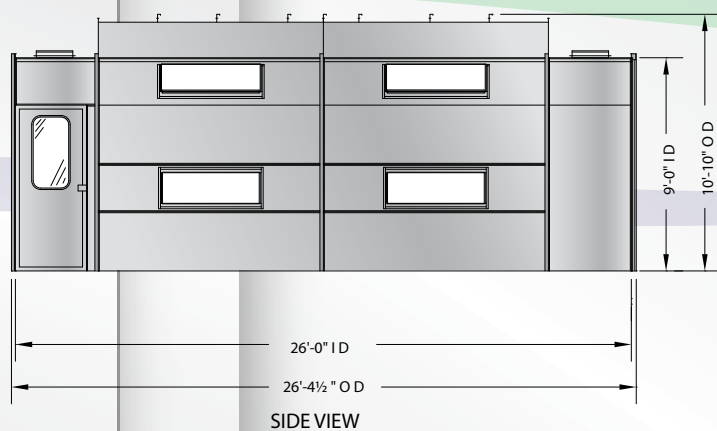
Our Modified Downdraft Automotive Paint Booth, in principle, has airflow like the conventional downdraft booth. The air is forced through filters at the top of the booth, flows around the part and out through the plenums located along the sides of the booth. The modified downdraft booth does not require an in-ground pit – giving you the features and performance of a downdraft booth without the cost of a pit. And like all Spray Systems booths, provides your painter with an optimum environment for a superior finish. This MD-1000 utilizes a heated air make-up system which pressurizes the booth. It also has the capability of providing a bake mode for final cure, which is great for high production shops. The air replacement system for the MD-1000 is purchased separately.



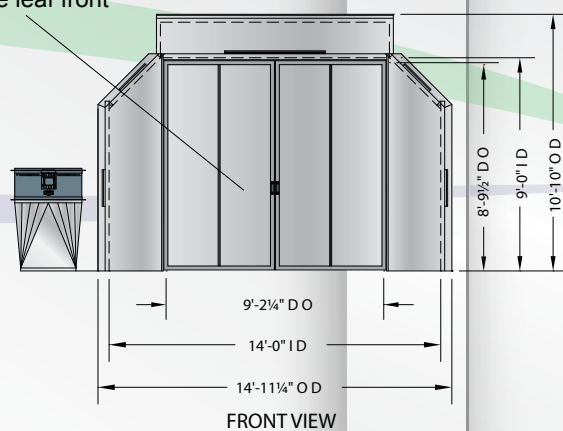
OPTIONS / ACCESSORIES

- Access Doors
- Air Make-up Units
- Air Solenoid Valves
- Constant Velocity Controls
- Control Panels
- Energy savings stand-by/idle mode
- Exhaust Stack Components
- Front Filter Doors
- Heaters / Infrared
- Lighting
- Magnahelic Gauges
- Observation Windows
- Pressurized Air Supply Plenums
- Safety Shut-Down System
- Specialized Filters

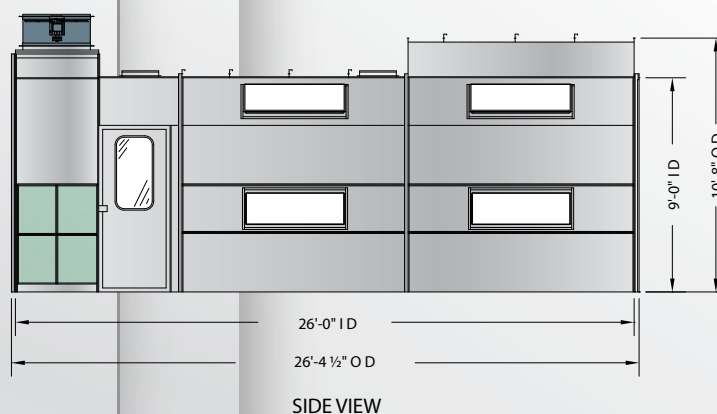
D-2000 Downdraft Paint Booth



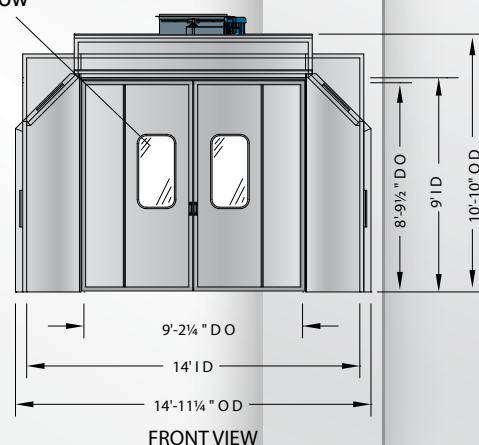
Shown with standard solid single leaf front doors



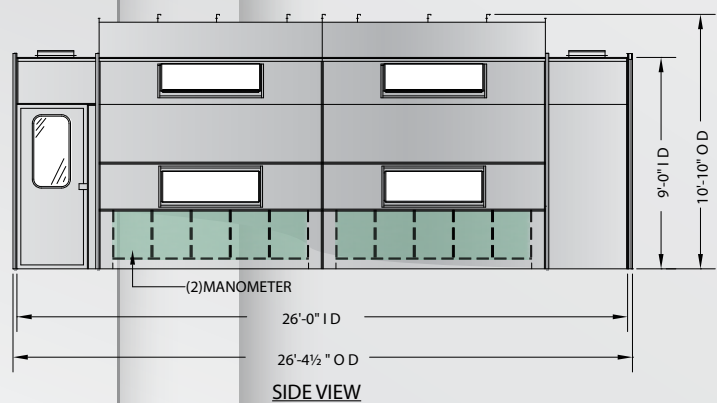
SD-1000 Semi Downdraft Paint Booth



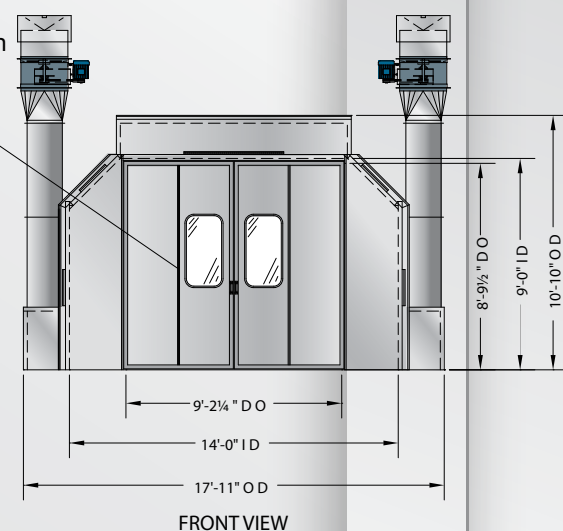
Shown with optional observation window



MD-1000 Modified Downdraft Paint Booth



Shown with optional bi-fold doors and optional observation windows



Model Number	Front Door W	Front Door H	Rear Door W	Rear Door H	Exhaust Fan Dia.	Motor H.P.	Airflow SCFM @5'S.P.	Exhaust Filter (Qty)	Intake Filter (Qty)	Light Fixture (Qty)	Shipping Weight Lbs
D-2000	9'-2 1/4"	8'-9 1/2"			34"	3	12600	18	16	10	3900
D-2000-DT	9'-2 1/4"	8'-9 1/2"	9'-2 1/4"	8'-9 1/2"	34"	3	12600	18	16	10	4300
SD-1000	9'-2 1/4"	8'-9 1/2"			34"	3	12600	12	8	10	3700
SD-1000-DT	9'-2 1/4"	8'-9 1/2"	9'-2 1/4"	8'-9 1/2"	34"	3	12600	12	8	10	4100
MD-1000	9'-2 1/4"	8'-9 1/2"			(2) 24"	(2) 2	12600	20	16	10	3700
MD-1000-DT	9'-2 1/4"	8'-9 1/2"	9'-2 1/4"	8'-9 1/2"	(2) 24"	(2) 2	12600	20	16	10	4100

Specifications are subject to change without notice



Important Reasons Why Spray Systems Is Your Best Choice

Built To Last



- **Precise**—CNC manufacturing means precise hole-positioning for easy bolting and panels that fit squarely together
- **Quality appearance**—with durable premium grade G-90 galvanized steel
- **Durable**—Nut and bolt assembly with panels punched 6" on centers
- **Quick assembly**—Panels precision fit, even for the most complex booth designs.

Faster - Easier Installation



- **4-Sided Panel Construction**—Panels with flanges on all four sides mean fewer parts to assemble and eliminates tie-in angles required with two-sided panels
- **Computer generated labels**—Labels on every component simplify sorting and speed installation
- **Itemized assembly drawings**—Item numbers on labels correspond to components on 3-D exploded view drawings
- **Save time and money**—Ease of assembly reduces time and cost of installation

Quiet-High Performance Exhaust Fans



- **Quiet**—Typically operates at noise levels below OSHA limits. Some competitor's fans operate as high as 105 dba. We have engineered fans as quiet as 64 dba for custom booths.
- **Efficient**—Computer selected for optimum performance at lowest possible fan blade speed
- **Dependable**—High efficiency, Tri-voltage, TEFC motor
- **Quality**—Designed and manufactured in-house; for easy installation, motor and drives ship pre-assembled.

Efficient-Effective Lighting



- **Uniform lighting**—With 4-tube fixtures to illuminate evenly
- **Cost efficient**—T-8 type fixtures reduce power cost by 20%
- **Easy accessibility**—Hinged panel for tube replacement
- **Easy mounting**—Light panels with framed openings are designed for bolting fixtures easily into place
- **Industrial Rated**—with dust tight seals
- **Meets booth code requirements**—UL/ETL approved and labeled

Premium—Secure Shipping



- **Damage prevention**—Fully enclosed and banded crating prevents shipping damage on LTL shipments
- **No installation down time**—Special piece loading system ensures no missing parts to delay installation
- **Quality control**—Shipments cross-checked three times to ensure order is complete along with 100 % customer satisfaction

Call For A Free Consultation

Discuss Your Spray Booth Needs
With Your Spray Systems Advisor

800 736-6944

1363 East Grand Avenue, Pomona, CA 91766
Phone 909 623-6944 • Fax 909 622-6267

www.spraysystems.com

