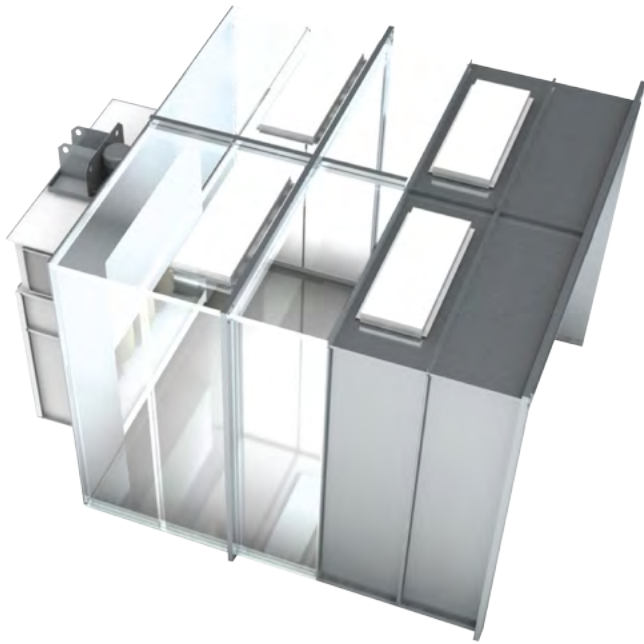


Recovery Powder Extended Working Depths



Depending on your coating needs, facility or booth location, adding extended working depths may be essential. Customize your industrial booth by adding extension modules with all the required support stiffeners, nuts and bolts, and caulking.

5'-0" or 7'-6" deep extension modules include all required lighting.

MODEL NUMBER			PART NUMBER			SHIPPING WEIGHT		
Booth Size	I.D. Width	I.D. Height	2'-6" Extension	5'-0" Extension	7'-6" Extension	EXT. 2'-6"	EXT. 5'-0"	EXT. 7'-6"
PB-585	5'-0"	7'-9"	20-1100-30	20-1100-60	20-1100-90	165	330	495
PB-887	7'-6"	7'-9"	20-1101-30	20-1101-60	20-1101-90	195	390	585
PB-1087	9'-6"	7'-9"	20-1102-30	20-1102-60	20-1102-90	215	430	645
PB-1287	12'-0"	7'-9"	20-1103-30	20-1103-60	20-1103-90	245	490	735
PB-1487	14'-0"	7'-9"	20-1104-30	20-1104-60	20-1104-90	265	530	795
PB-1687	16'-0"	7'-9"	20-1105-30	20-1105-60	20-1105-90	285	570	855
PB-1887	18'-0"	7'-9"	20-1106-30	20-1106-60	20-1106-90	305	610	915
PB-2087	20'-0"	7'-9"	20-1107-30	20-1107-60	20-1107-90	325	650	975
PB-2287	22'-0"	7'-9"	20-1108-30	20-1108-60	20-1108-90	355	710	1065
PB-2487	24'-0"	7'-9"	20-1109-30	20-1109-60	20-1109-90	375	750	1125
PB-8107	7'-6"	9'-9"	20-1111-30	20-1111-60	20-1111-90	215	430	645
PB-10107	9'-6"	9'-9"	20-1112-30	20-1112-60	20-1112-90	235	470	705
PB-12107	12'-0"	9'-9"	20-1113-30	20-1113-60	20-1113-90	265	530	795
PB-14107	14'-0"	9'-9"	20-1114-30	20-1114-60	20-1114-90	285	570	855
PB-16107	16'-0"	9'-9"	20-1115-30	20-1115-60	20-1115-90	305	610	915
PB-18107	18'-0"	9'-9"	20-1116-30	20-1116-60	20-1116-90	325	650	975
PB-20107	20'-0"	9'-9"	20-1117-30	20-1117-60	20-1117-90	355	710	1065
PB-22107	22'-0"	9'-9"	20-1118-30	20-1118-60	20-1118-90	375	750	1125
PB-24107	24'-0"	9'-9"	20-1119-30	20-1119-60	20-1119-90	395	790	1185
PB-8127	7'-6"	11'-9"	20-1120-30	20-1120-60	20-1120-90	255	510	765
PB-10127	9'-6"	11'-9"	20-1121-30	20-1121-60	20-1121-90	275	550	825
PB-12127	12'-0"	11'-9"	20-1122-30	20-1122-60	20-1122-90	295	590	885
PB-14127	14'-0"	11'-9"	20-1123-30	20-1123-60	20-1123-90	315	630	945
PB-16127	16'-0"	11'-9"	20-1124-30	20-1124-60	20-1124-90	345	690	1035
PB-18127	18'-0"	11'-9"	20-1125-30	20-1125-60	20-1125-90	365	730	1095
PB-20127	20'-0"	11'-9"	20-1126-30	20-1126-60	20-1126-90	385	770	1155
PB-22127	22'-0"	11'-9"	20-1127-30	20-1127-60	20-1127-90	405	810	1215
PB-24127	24'-0"	11'-9"	20-1128-30	20-1128-60	20-1128-90	425	850	1275

Specifications are subject to change without notice