



## LARGE EQUIPMENT & TRUCK BOOTHS

*Building your booth the right way for all the right reasons*

### Highest Quality Finish

High-tech finishes for large equipment vehicles continue to be in demand today. Spray Systems offers down-draft, modified down-drafts and three standard cross draft booths in large sizes to accommodate trucks and large equipment. Our truck line includes booths in 16, 18, and 20 foot widths, and your paint booth length can be extended for even larger equipment.

We'll ensure you get the solution you need to meet your finishing requirements. Through our custom engineering process which insures uniform air flow, our customers frequently complement our booths for creating an environment that allows painters to apply the highest quality finishes.

**Lower Operating Costs** We use higher efficiency components and designs. We offer energy efficient components from VFD drives, recirculating exhaust systems, high efficiency motors, (T-8) lighting, and booth idle packages resulting in lower operating costs.

**Environmentally Safe** The challenges for finishing large equipment vehicles or trucks will be specifically considered when designing and manufacturing your Large Equipment/Truck Booth. Our booths are designed to safely and efficiently remove the overspray from the painting operation, while maintaining uniform air flow throughout the work area. Each Large Equipment/Truck Booth meets safety and code requirements NFPA-33 and IFC to protect those that work in any large equipment or truck spray environments, and the world outside.

## PACKAGE FEATURES & BENEFITS

- **CNC and CAD Technology**—panels are manufactured of premium 18 gauge G-90 galvanized steel, and are precision-punched on six inch centers, allowing for easy nut and bolt assembly, and exploded view assembly drawings supplied
- **High Efficiency Motor** — all motors are energy efficient, totally enclosed, fan cooled, multi voltage, 208/230/460, three phase with a single phase option
- **Exhaust Filters**—20" x 25" filters yield a larger filter area, with a specially spun fiber design to remove paint particles efficiently. A manometer to properly manage timing of filter change-out
- **Intake Filters**—these filters, with soft, pliable polyester fibers coated with a special adhesives for superior dust collection, are specifically designed to remove 98% or more of dust particles in order to deliver a Class A finish
- **Quiet Exhaust Fan**—typically operates at low dBA noise levels below OSHA limits
- **Lighting**—high efficiency lighting fixtures designed for mounting outside booth, industrial rated, four-tube (T-8) fluorescent fixtures with dust-tight seals and are ETL listed
- **Latches**—heavy duty, quick release type with positive closing and panic hardware
- **Doors/Side Access Door**—both the filter and solid type doors have a structural steel tube frame, leak proof wiper type seals at the bottom and polyfoam seals at the center; side access door meets NFPA Lifeline 101 requirements, and includes an 18" x 36" observation window
- **UL Listed**—all electrical components and latching devices are UL/ETL listed
- **Essential Accessories**—all necessary caulking, nuts and bolts, hardware for proper booth installation

## Crossdraft Spray Booths

### Large Equipment/Truck Booth

Our Large Equipment/Truck Booths use a cross flow air principle with a front or rear flow option. Air is drawn in through filtered front doors, and exhausts out through the filter plenums located at the rear of the booth. In contrast, our rear flow booth is designed with a rear-filtered wall, and the exhaust chamber is located at the opposite end near the entry doors. This rear flow design minimizes dust contamination within the spray booth. These traditional style booths come in standard lengths of 45, 52, and 60 feet, and can be made in any length to fit your paint finishing requirements.

### Pressurized Large Equipment/Truck Booth

Our pressurized crossdraft creates a positive booth atmosphere. By providing uniform air movement throughout the booth, you'll have an ultimate clean-paint environment for those high-quality finishes. These pressurized paint booths with a minimum length of 45 feet are perfect for larger equipment painting requirements. Our Pressurized Large Equipment/Truck Booth utilizes a heated air make-up system which pressurizes the booth, and also has the capability of providing a bake mode for final cure, which is great for high production shops. The air replacement system is purchased separately.

### Outdoor Large Equipment/Truck Booth

Our exclusive outdoor-rated spray booth has a unique weatherized design for outdoor installation without the need for a canopy or any protective covering. Your outdoor booth saves valuable indoor floor space. Spray Systems will design your outdoor booth to meet your building codes and seismic requirements.

#### The Outdoor Booth comes complete with:

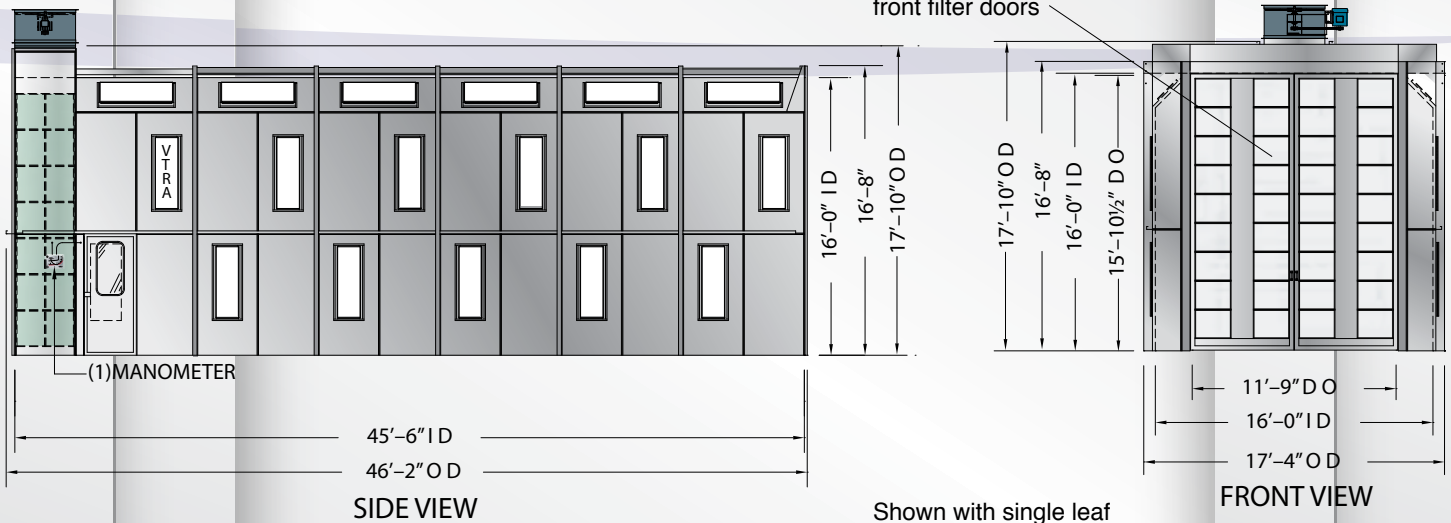
- Duct Package
- Light Covers
- Special Caulking and Seal Kit
- Motor Cover

#### Optional:

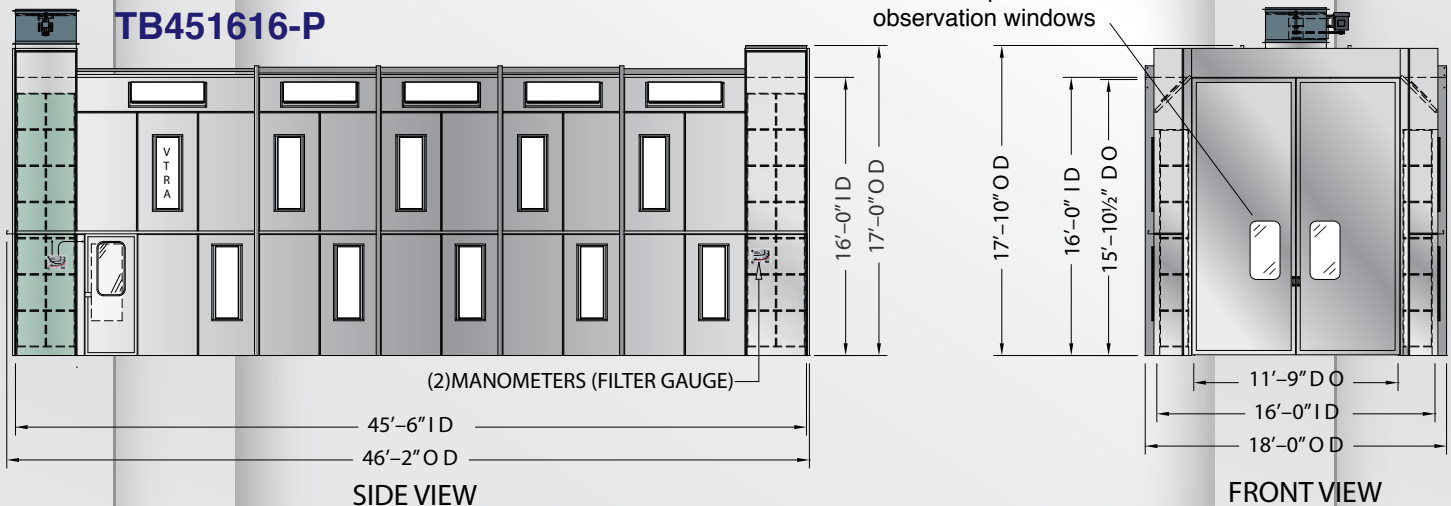
- Insulation
- Color matching corrugated side panels

# Large Equipment / Truck Booths

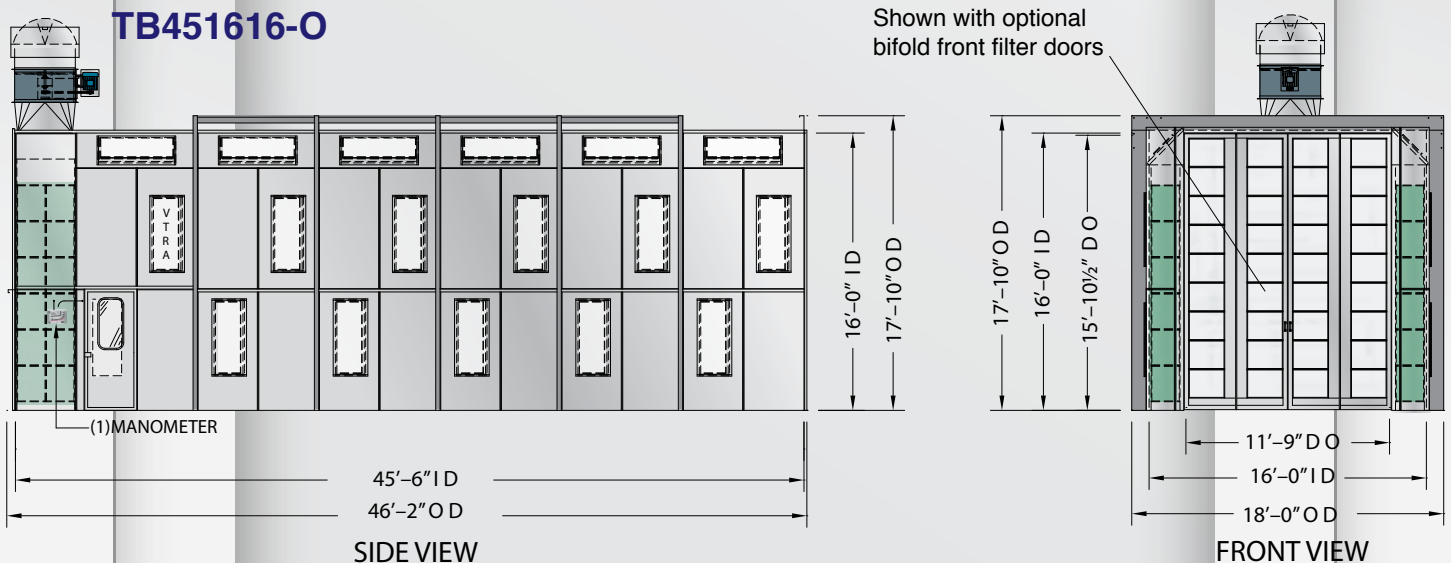
## TB451616-F



## TB451616-P



## TB451616-O





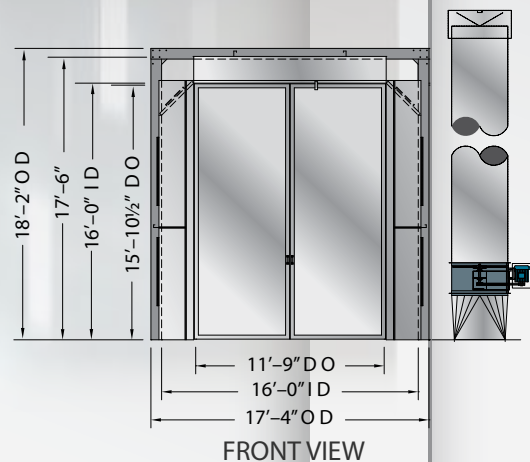
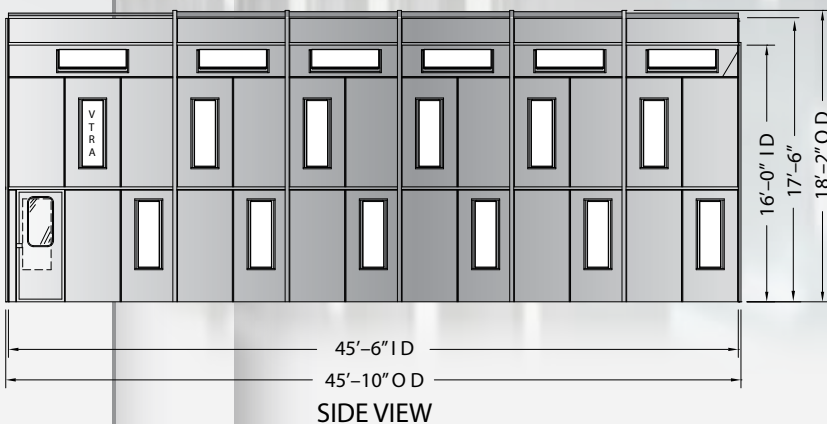
## Downdraft Truck Booths

### Downdraft Large Equipment/Truck Booth

Our Downdraft Large Equipment/Truck Booth is our premier design and one most sought-after by our customers requiring high-quality finishes. Using a pit-style downdraft design, the air flows over the top of the part, and is pulled down through the filters beneath the floor grating, which is set in a trench or pit. The downdraft air movement creates an ideal environment for removing over-spray contamination. These downdraft booths come in standard lengths of 45, 52, and 60 feet, and can be made in any length to fit your paint finishing requirements.



**TB451616-DD**



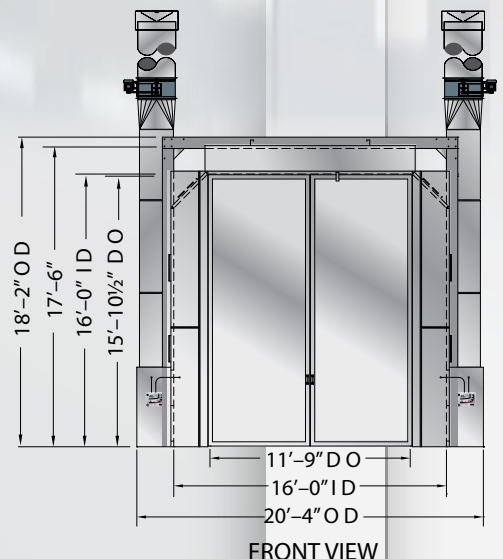
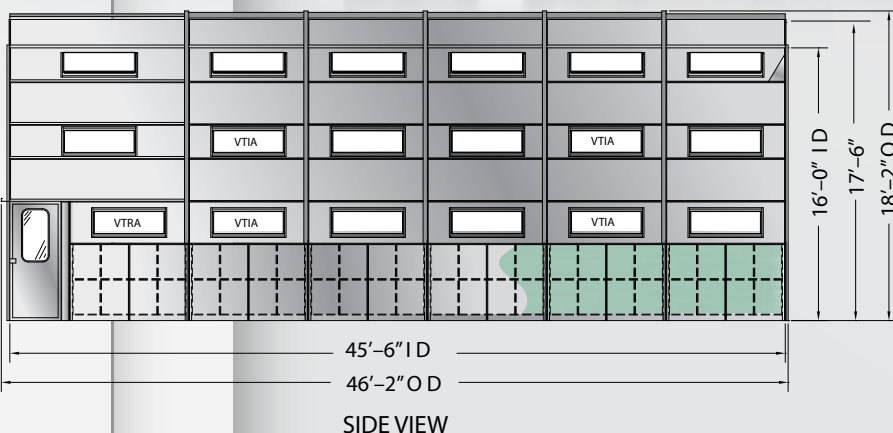
# Modified Downdraft Booths

## Modified Downdraft Large Equipment/Truck Booth

Our Modified Downdraft Large Equipment/Truck Booth, in principle has airflow like the conventional downdraft booth. The air is drawn through filters at the top of the booth, flows around the part and out through the plenums located along the sides of the booth. The modified downdraft booth does not require an in-ground pit, giving you the features and performance of a downdraft booth without the cost for a pit. Like all Spray Systems booths, the modified downdraft provides your painter with an optimum environment for a superior finish. The modified downdraft booths come in standard lengths of 45, 52 and 60 feet, and can be made in any length to fit your paint finishing requirements.



### TB451616-MD



## 16' Wide Large Equipment Truck Booths

Model Number	Work Dimensions			Overall Dimensions			Exhaust Fan Dia	Motor H.P.	Airflow SCFM @ .5" S.P.	Exhaust Filters (Qty)	Intake Filters (Qty)	Light Fixture (Qty)	Shipping Weight Lbs
	L	W	H	O L	O W	O H							
TB-451616-F	45'-6"	16'-0"	16'-0"	46'-2"	17'-4"	17'-10"	42"	5	25600	40	36	35	10800
TB-451616-FDT	45'-6"	16'-0"	16'-0"	45'-10"	17'-4"	17'-10"	42"	5	25600	40	36	35	11400
TB-451616-R	45'-6"	16'-0"	16'-0"	46'-2"	17'-4"	17'-10"	42"	5	25600	40	42	35	10800
TB-451616-P	45'-6"	16'-0"	16'-0"	46'-2"	17'-4"	17'-10"	42"	5	25600	40	40	31	11800
TB-451616-PDT	45'-6"	16'-0"	16'-0"	45'-10"	17'-4"	17'-10"	42"	5	25600	40	40	31	12400
TB-451616-O	45'-6"	16'-0"	16'-0"	46'-2"	18'-0"	17'-0"	42"	5	25600	36	36	36	13500
TB-451616-D	45'-6"	16'-0"	16'-0"	46'-2"	17'-4"	18'-2"	(2)42"	5	36400	Varies	95	37	13000
TB-451616-DDT	45'-6"	16'-0"	16'-0"	45'-10"	17'-4"	18'-2"	(2)42"	5	36400	Pit Style	95	37	13600
TB-451616-MD	45'-6"	16'-0"	16'-0"	46'-2"	20'-4"	18'-2"	(4)34"	2	36400	96	95	36	13000
TB-451616-MDDT	45'-6"	16'-0"	16'-0"	45'-10"	20'-4"	18'-2"	(4)34"	2	36400	96	95	36	13600
TB-521616-F	52'-6"	16'-0"	16'-0"	53'-2"	17'-4"	17'-10"	42"	5	25600	40	36	41	11500
TB-521616-FDT	52'-6"	16'-0"	16'-0"	52'-10"	17'-4"	17'-10"	42"	5	25600	40	36	41	12100
TB-521616-R	52'-6"	16'-0"	16'-0"	53'-2"	17'-4"	17'-10"	42"	5	25600	40	42	41	11500
TB-521616-P	52'-6"	16'-0"	16'-0"	53'-2"	17'-4"	17'-10"	42"	5	25600	40	40	37	12500
TB-521616-PDT	52'-6"	16'-0"	16'-0"	52'-10"	17'-4"	17'-10"	42"	5	25600	40	40	37	13100
TB-521616-O	52'-6"	16'-0"	16'-0"	53'-2"	18'-0"	17'-0"	42"	5	25600	36	36	41	15500
TB-521616-D	52'-6"	16'-0"	16'-0"	53'-2"	17'-4"	18'-2"	(2)42"	5	42000	Varies	110	43	15000
TB-521616-DDT	52'-6"	16'-0"	16'-0"	52'-10"	17'-4"	18'-2"	(2)42"	5	42000	Pit Style	110	43	15600
TB-521616-MD	52'-6"	16'-0"	16'-0"	53'-2"	20'-4"	18'-2"	(4)34"	3	42000	112	110	42	15400
TB-521616-MDDT	52'-6"	16'-0"	16'-0"	52'-10"	20'-4"	18'-2"	(4)34"	3	42000	112	110	42	16000
TB-601616-F	59'-6"	16'-0"	16'-0"	60'-2"	17'-4"	17'-10"	42"	5	25600	40	36	47	13200
TB-601616-FDT	59'-6"	16'-0"	16'-0"	59'-10"	17'-4"	17'-10"	42"	5	25600	40	36	47	13800
TB-601616-R	59'-6"	16'-0"	16'-0"	60'-2"	17'-4"	17'-10"	42"	5	25600	40	42	47	13200
TB-601616-P	59'-6"	16'-0"	16'-0"	60'-2"	17'-4"	17'-10"	42"	5	25600	40	40	42	14800
TB-601616-PDT	59'-6"	16'-0"	16'-0"	59'-10"	17'-4"	17'-10"	42"	5	25600	40	40	42	15400
TB-601616-O	59'-6"	16'-0"	16'-0"	60'-2"	18'-0"	17'-0"	42"	5	25600	36	36	48	17500
TB-601616-D	59'-6"	16'-0"	16'-0"	60'-2"	17'-4"	18'-2"	(4)34"	3	47600	Varies	125	48	17700
TB-601616-DDT	59'-6"	16'-0"	16'-0"	59'-10"	17'-4"	18'-2"	(4)34"	3	47600	Pit Style	125	48	18300
TB-601616-MD	59'-6"	16'-0"	16'-0"	60'-2"	20'-4"	18'-2"	(4)34"	3	47600	120	125	47	17700
TB-601616-MDDT	59'-6"	16'-0"	16'-0"	59'-10"	20'-4"	18'-2"	(4)34"	3	47600	120	125	47	18300

Specifications are subject to change without notice

## 18' Wide Large Equipment / Truck Booths

Model Number	Work Dimensions			Overall Dimensions			Exhaust Fan Dia	Motor H.P.	Airflow SCFM @ .5" S.P.	Exhaust Filters (Qty)	Intake Filters (Qty)	Light Fixture (Qty)	Shipping Weight Lbs
	L	W	H	O L	O W	O H							
TB-451816-F	45'-6"	18'-0"	16'-0"	46'-4"	19'-4"	17'-10"	42"	7.5	28800	40	42	35	11550
TB-451816-FDT	45'-6"	18'-0"	16'-0"	45'-10"	19'-4"	17'-10"	42"	7.5	28800	40	42	35	12150
TB-451816-R	45'-6"	18'-0"	16'-0"	46'-4"	19'-4"	17'-10"	42"	7.5	28800	40	56	35	11550
TB-451816-P	45'-6"	18'-0"	16'-0"	46'-4"	19'-4"	17'-10"	42"	7.5	28800	40	40	31	12550
TB-451816-PDT	45'-6"	18'-0"	16'-0"	45'-10"	19'-4"	17'-10"	42"	7.5	28800	40	40	31	13150
TB-451816-D	45'-6"	18'-0"	16'-0"	46'-4"	19'-4"	18'-2"	(2)42"	5	40950	Varies	114	37	15900
TB-451816-DDT	45'-6"	18'-0"	16'-0"	45'-10"	19'-4"	18'-2"	(2)42"	5	40950	Pit Style	114	37	16500
TB-451816-MD	45'-6"	18'-0"	16'-0"	46'-4"	22'-4"	18'-2"	(4)34"	2	40950	96	114	36	13900
TB-451816-MDDT	45'-6"	18'-0"	16'-0"	45'-10"	22'-4"	18'-2"	(4)34"	2	40950	96	114	36	14500
TB-521816-F	52'-6"	18'-0"	16'-0"	53'-4"	19'-4"	17'-10"	42"	7.5	28800	40	42	41	12250
TB-521816-FDT	52'-6"	18'-0"	16'-0"	52'-10"	19'-4"	17'-10"	42"	7.5	28800	40	42	41	12850
TB-521816-R	52'-6"	18'-0"	16'-0"	53'-4"	19'-4"	17'-10"	42"	7.5	28800	40	54	41	12250
TB-521816-P	52'-6"	18'-0"	16'-0"	53'-4"	19'-4"	17'-10"	42"	7.5	28800	40	40	37	13250
TB-521816-PDT	52'-6"	18'-0"	16'-0"	52'-10"	19'-4"	17'-10"	42"	7.5	28800	40	40	37	13850
TB-521816-D	52'-6"	18'-0"	16'-0"	53'-4"	19'-4"	18'-2"	(4)34"	3	47250	Varies	132	43	18400
TB-521816-DDT	52'-6"	18'-0"	16'-0"	52'-10"	19'-4"	18'-2"	(4)34"	3	47250	Pit Style	132	43	19000
TB-521816-MD	52'-6"	18'-0"	16'-0"	53'-4"	22'-4"	18'-2"	(4)34"	3	47250	112	132	41	18400
TB-521816-MDDT	52'-6"	18'-0"	16'-0"	52'-10"	22'-4"	18'-2"	(4)34"	3	47250	112	132	41	19000

Specifications are subject to change without notice



# Large Equipment / Truck Booths

## 18' Wide Large Equipment / Truck Booths (Cont.)

Model Number	Work Dimensions			Overall Dimensions			Exhaust Fan Dia	Motor H.P.	Airflow SCFM @.5" S.P.	Exhaust Filters (Qty)	Intake Filters (Qty)	Light Fixture (Qty)	Shipping Weight Lbs
TB-601816-F	59'6"	18'-0"	16'-0"	60'-4"	19'-4"	17'-10"	42"	7.5	28800	40	42	47	13950
TB-601816-FDT	59'6"	18'-0"	16'-0"	59'-10"	19'-4"	17'-10"	42"	7.5	28800	40	42	47	14550
TB-601816-R	59'6"	18'-0"	16'-0"	60'-4"	19'-4"	17'-10"	42"	7.5	28800	40	54	47	13950
TB-601816-P	59'6"	18'-0"	16'-0"	60'-4"	19'-4"	17'-10"	42"	7.5	28800	40	40	42	14950
TB-601816-PDT	59'6"	18'-0"	16'-0"	59'-10"	19'-4"	17'-10"	42"	7.5	28800	40	40	42	15550
TB-601816-D	59'6"	18'-0"	16'-0"	60'-4"	19'-4"	18'-2"	(4)34"	3	53550	Varies	150	48	21230
TB-601816-DDT	59'6"	18'-0"	16'-0"	59'-10"	19'-4"	18'-2"	(4)34"	3	53550	Pit Style	150	48	21830
TB-601816-MD	59'6"	18'-0"	16'-0"	60'-4"	22'-4"	18'-2"	(4)34"	3	53550	120	150	47	21230
TB-601816-MDDT	59'6"	18'-0"	16'-0"	59'-10"	22'-4"	18'-2"	(4)34"	3	53550	120	150	47	21830

Specifications are subject to change without notice

## 20' Wide Large Equipment / Truck Booths

Model Number	Work Dimensions			Overall Dimensions			Exhaust Fan Dia	Motor H.P.	Airflow SCFM @.5" S.P.	Exhaust Filters (Qty)	Intake Filters (Qty)	Light Fixture (Qty)	Shipping Weight Lbs
TB-452016-F	45'-6"	20'-0"	16'-0"	46'-4"	22'-0"	17'-10"	(2)42"	3	32000	40	56	35	12600
TB-452016-FDT	45'-6"	20'-0"	16'-0"	45'-10"	22'-0"	17'-10"	(2)42"	3	32000	40	56	35	13200
TB-452016-R	45'-6"	20'-0"	16'-0"	46'-4"	22'-0"	17'-10"	(2)42"	3	32000	40	63	35	12600
TB-452016-P	45'-6"	20'-0"	16'-0"	46'-4"	22'-0"	17'-8"	(2)42"	3	32000	40	40	31	13600
TB-452016-PDT	45'-6"	20'-0"	16'-0"	45'-10"	22'-0"	17'-10"	(2)42"	3	32000	40	40	31	14600
TB-452016-D	45'-6"	20'-0"	16'-0"	46'-4"	22'-0"	18'-6"	(4)34"	3	45500	Varies	114	37	17200
TB-452016-DDT	45'-6"	20'-0"	16'-0"	45'-10"	22'-0"	18'-6"	(4)34"	3	45500	Pit Style	114	37	17800
TB-452016-MD	45'-6"	20'-0"	16'-0"	46'-4"	26'-4"	18'-6"	(4)34"	3	45500	96	114	36	17200
TB-452016-MDDT	45'-6"	20'-0"	16'-0"	45'-10"	26'-4"	18'-6"	(4)34"	3	45500	96	114	36	17800
TB-522016-F	52'6"	20'-0"	16'-0"	53'-4"	22'-0"	17'-10"	(2)42"	3	32000	40	56	41	13300
TB-522016-FDT	52'6"	20'-0"	16'-0"	52'-10"	22'-0"	17'-8"	(2)42"	3	32000	40	56	41	13900
TB-522016-R	52'6"	20'-0"	16'-0"	53'-4"	22'-0"	17'-8"	(2)42"	3	32000	40	63	41	13300
TB-522016-P	52'6"	20'-0"	16'-0"	53'-4"	22'-0"	17'-8"	(2)42"	3	32000	40	40	37	14300
TB-522016-PDT	52'6"	20'-0"	16'-0"	52'-10"	22'-0"	17'-8"	(2)42"	3	32000	40	40	37	14900
TB-522016-D	52'6"	20'-0"	16'-0"	53'-4"	22'-0"	18'-6"	(4)42"	3	52500	Varies	110	43	19850
TB-522016-DDT	52'6"	20'-0"	16'-0"	52'-10"	22'-0"	18'-6"	(4)42"	3	52500	Pit Style	110	43	20450
TB-522016-MD	52'6"	20'-0"	16'-0"	53'-4"	26'-4"	18'-6"	(4)42"	3	52500	112	110	42	19850
TB-522016-MDDT	52'6"	20'-0"	16'-0"	52'-10"	26'-4"	18'-6"	(4)42"	3	52500	112	110	42	20450
TB-602016-F	59'6"	20'-0"	16'-0"	60'-4"	22'-0"	17'-8"	(2)42"	3	32000	40	56	47	15000
TB-602016-FDT	59'6"	20'-0"	16'-0"	59'-10"	22'-0"	17'-8"	(2)42"	3	32000	40	56	47	15600
TB-602016-R	59'6"	20'-0"	16'-0"	60'-4"	22'-0"	17'-8"	(2)42"	3	32000	40	63	48	15000
TB-602016-P	59'6"	20'-0"	16'-0"	60'-4"	22'-0"	17'-8"	(2)42"	3	32000	40	40	42	16000
TB-602016-PDT	59'6"	20'-0"	16'-0"	59'-10"	22'-0"	17'-8"	(2)42"	3	32000	40	40	42	16600
TB-602016-D	59'6"	20'-0"	16'-0"	60'-4"	22'-0"	18'-6"	(4)42"	3	59500	Varies	150	48	22900
TB-602016-DDT	59'6"	20'-0"	16'-0"	59'-10"	22'-0"	18'-6"	(4)42"	3	59500	Pit Style	150	48	23500
TB-602016-MD	59'6"	20'-0"	16'-0"	60'-4"	26'-4"	18'-6"	(4)42"	3	59500	120	150	48	22900
TB-602016-MDDT	59'6"	20'-0"	16'-0"	59'-10"	26'-4"	18'-6"	(4)42"	3	59500	120	150	48	23500

Specifications are subject to change without notice

## OPTIONS / ACCESSORIES

- Access Doors
- Air Make-up Units
- Air Solenoid Valves
- Constant Velocity Controls
- Control Panels
- Energy savings stand-by/idle mode
- Exhaust Stack Components
- Front Filter Doors
- Heaters / Infrared
- Lighting
- Magnahelic Gauges
- Observation Windows
- Pressurized Air Supply Plenums
- Safety Shut-Down System
- Specialized Filters



## Where Custom Designs Are Standard

### Booth Designs

- Open Face Booths
- Enclosed Booths
  - Cross Draft
  - Down Draft
  - Side Down Draft
  - Semi-Down Draft
  - Spray Bake

### Booth Types

- Bench Booths
- Blasting Enclosures
- Booth Extensions
- Conveyorized Spray Booths
- Customized Duct Designs
- Dry Filter/Industrial Booths
- Dust Collectors
- Grinding Booths
- Powder Booths
  - Recovery type
  - Non-Recovery type
- Truck and Large Equipment Booths
- Water Wash Spray Booths
  - Centrifuge Sludge Systems
  - Pump Type
  - Pumpless Type

### Additional Options

- Air Make-up Units
- Booth Extensions
- Electrical Control Panels
- Flash Tunnels
- Ovens
  - Drying Enclosures
  - Convection (gas or electric)
  - Infrared (catalytic and electric)
- Turnkey and Custom Systems
- VOC Abatement Systems

## An American Tradition of Excellence

**The Spray Systems Advantage** Located in Pomona, California since 1978, our 45,000 square foot facility houses state-of-the-art machinery operated by dedicated and highly skilled team members. With more than 35 years of experience in the design, fabrication and installation of spray booths, we can deliver to you the custom products, precision engineering, and responsive service to ensure your complete satisfaction – whatever your company size, finished product specifications, production rates, or coating needs.

**Enjoy Our Wide Selection And Flexible Design** We feature more than 300 booth design options for a wide variety of uses, and specialize in custom designs for the most unique of applications. To ensure full integration, our spray booth design will take into account all of your specific finishing requirements, including filtration, lighting, temperature, humidity and air flow.

**Discover Precise, Custom Tailored Engineering Solutions** All booths are custom designed using the latest version of AutoCAD to ensure precision and prevent against interference fit – early detection in the design stage prevents costly field modifications for you. We feature easy-to-read and easy-to-follow isometric assembly drawings. Each panel and component part is identified with a computer-generated label that precisely matches the CAD-produced, exploded-view assembly drawing – all making installation efficient and trouble-free.

**Receive Unparalleled Personal Attention** Spray Systems is committed to providing you dedicated service and support that place a high value on accountability and quality control. That means walking you through every phase of the design and installation process and tailoring our manufacturing to your specific requirements. We want to ensure the on-going success of your spray booth training, service, and operations. For us, quality of service doesn't end with the installation.

### Call For A Free Consultation

### Discuss Your Spray Booth Needs With Your Spray Systems Advisor 800 736-6944

1363 East Grand Avenue  
Pomona, CA 91766

Phone 909 623-6944 • Fax 909 622-6267

[www.spraysystems.com](http://www.spraysystems.com)

