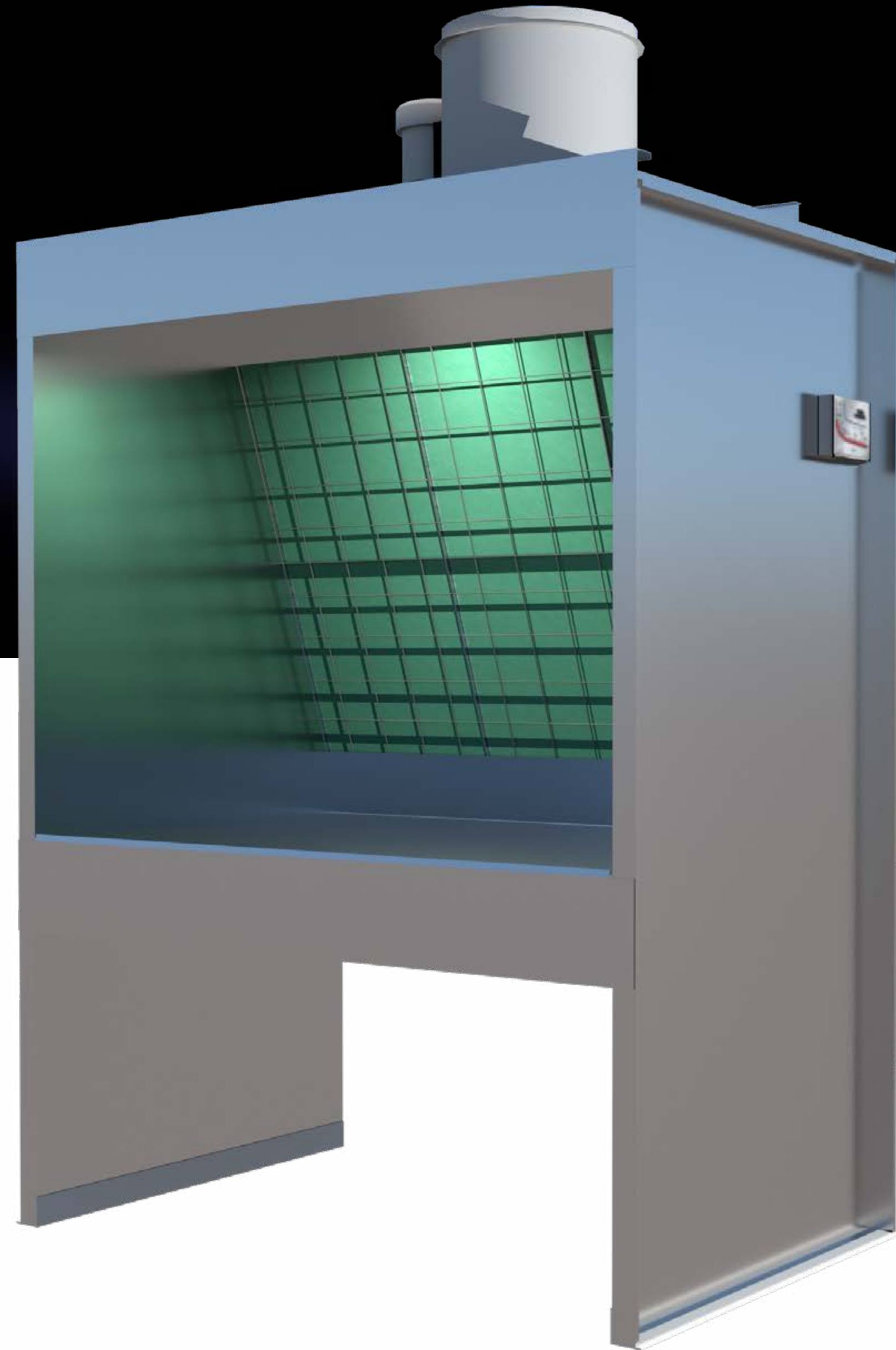




Engineering Beyond the Booth

# Bench Type and Touch-Up Spray Booths



## Bench Type and Touch-Up Spray Booths

### Environmentally Safe

Each industrial bench booth exceeds safety and code requirements – NFPA-33, IFC – to protect those that work in any manufacturing spray environment, and the world outside...

[Read More](#)

## Designing Your Booth For The Highest Quality Finish

MADE IN THE USA

## While Maintaining Uniform Airflow Through The Entire Work Area...

### Environmentally Safe

Each Bench Booth exceeds safety and code requirements –NFPA-33, IFC – to protect those that work in any industrial spray environment and the world outside. Your booth will be designed to efficiently remove the overspray from the painting operation while maintaining uniform airflow throughout the work area.

### Space Saving and Ease-of-Use

Bench booths are designed for finishing small parts that must be painted at bench height. We've designed a variety of bench booths that meet your spray requirements while maximizing your floor space. Our bench booths incorporate all of the same design features that are included in our large industrial booths.

**Appearance and Durability** Your booth will have a quality appearance with our durable premium grade G-90 galvanized steel—a superior steel material that allows our booths to resist corrosion and to last longer.

---

## OPTIONS / ACCESSORIES

---

- Air Solenoid Valves
- Constant Velocity Controls
- Control Panels
- Energy Savings Standby/Idle Mode
- Exhaust Stack Components
- Heaters / Infrared
- Lighting
- Magnehelic® Gauges
- Observation Windows
- Safety Shut-Down System
- Specialized Filters

## Designing Your Booth With The Right Size And The Right Specifications...

### PACKAGE FEATURES & BENEFITS

**CNC and CAD Technology**—booth panels are manufactured of premium 18 gauge G-90 galvanized steel, and are precision-punched on six-inch centers, allowing for easy nut and bolt assembly, and exploded view assembly drawings supplied

**Quiet Exhaust Fan**—typically operates at low dBa noise levels below OSHA limits

**High-Efficiency Motor**—tri voltage, TEFC, motors that match the high-efficiency performance of the exhaust fan, three-phase with a single-phase option

**Exhaust Filters** – 20" x 25" filters yield a larger filter area. A manometer to properly manage filter maintenance is included

**Intake Filters** – these filters are specifically designed to remove 98% or more of dust particles in order to deliver a Class A finish

**Strategic Light Placement**—Using LED lighting technology for improved visual acuity throughout the spray booth environment, with lower operating costs, direction ability, and longer lasting without need for maintenance

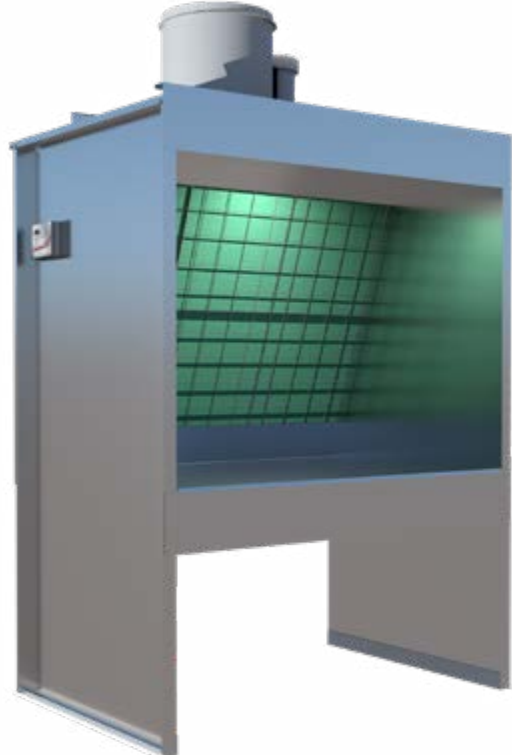
**Latches** – heavy duty, quick release type with positive closing and panic hardware

**UL Listed** – all electrical components and latching devices are UL/ETL listed

**Essential Accessories** – all necessary caulking, nuts and bolts, hardware for proper booth installation

### SPECIFICATIONS

Click on Specifications to Expand



Model Number	Bench Height
BB-36	2'-10"
BB-48	2'-10"
BB-60	2'-10"
BB-72	2'-10"
BB-96	2'-10"

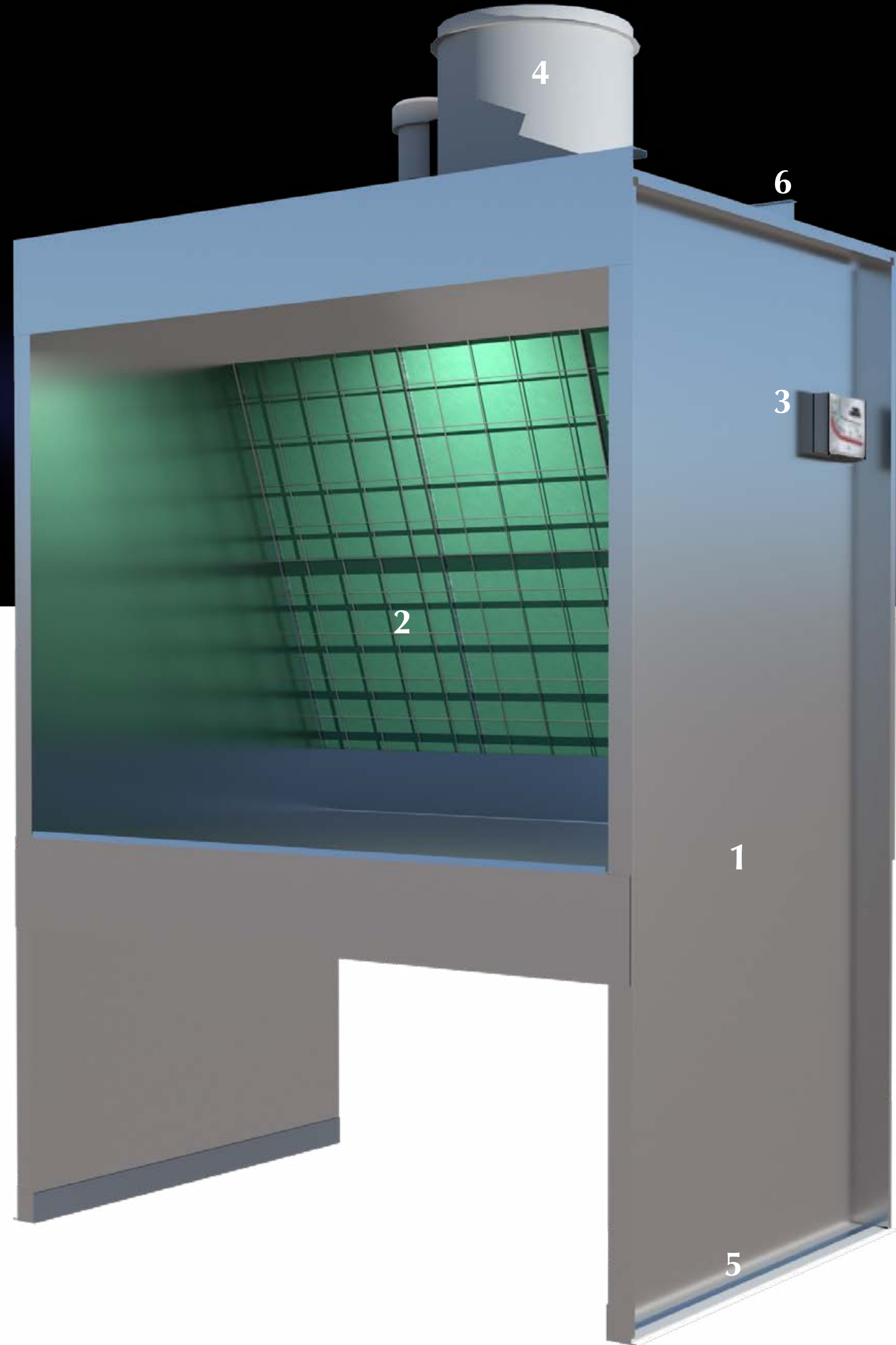


Model Number	Bench Height
BT-2	N/A
BT-2L	2'-10"

Engineering Beyond the Booth



# Bench Type and Touch-Up Spray Booth Components



# Engineering Beyond the Booth

Engineering Beyond the Booth

## Booth Designs

- Open Face Booths
- Enclosed Booths
  - Cross Draft
  - Down Draft
  - Side Down Draft
  - Semi-Down Draft
  - Spray Bake

## Booth Types

- Bench Booths
- Blasting Enclosures
- Booth Extensions
- Conveyorized Spray Booths
- Customized Duct Designs
- Dry Filter/Industrial Booths
- Dust Collectors
- Grinding Booths
- Powder Booths
  - Recovery type
  - Non-Recovery type
- Truck and Large Equipment Booths
- Water Wash Spray Booths
  - Centrifuge Sludge Systems
  - Pump Type
  - Pumpless Type

## Additional Options

- Air Make-up Units
- Booth Extensions
- Electrical Control Panels
- Flash Tunnels
- Ovens
  - Drying Enclosures
  - Convection (gas or electric)
  - Infrared (catalytic and electric)
- Turnkey and Custom Systems
- VOC Abatement Systems

With over 40 years of experience, we’ve learned that the perfect custom paint booth is more than just a piece of industrial equipment. It’s an integral part of the manufacturer’s mission to make the best possible products with max efficiency. That’s why our engineers work closely with you to learn how you operate, what your vision is for the future, and with the right booth design, how we can help you get there.

**Enjoy Our Wide Selection And Flexible Design** We feature more than 300 booth design options for a wide variety of uses and specialize in custom designs for the most unique of applications. To ensure full integration, our spray booth design will take into account all of your specific finishing requirements, including filtration, lighting, temperature, humidity, and airflow.

**Discover Precise, Custom Tailored Engineering Solutions** All booths are custom designed using the latest version of AutoCAD to ensure precision and prevent against interference fit – early detection in the design stage prevents costly field modifications for you. We feature easy-to-read and easy-to-follow isometric assembly drawings. Each panel and component part is identified with a computer-generated label that precisely matches the CAD-produced, exploded-view assembly drawing – all making installation efficient and trouble-free.

**Receive Unparalleled Personal Attention** Spray Systems is committed to providing you dedicated service and support that place a high value on accountability and quality control. That means walking you through every phase of the design and installation process and tailoring our manufacturing to your specific requirements. We want to ensure the on-going success of your spray booth training, service, and operations. For us, the quality of service doesn’t end with the installation.

## Call For A Free Consultation or...

[Click Here for a Free Quote](#)

Discuss Your Spray Booth Needs With Your Spray Systems Advisor

800 736-6944

1363 East Grand Avenue | Pomona, CA 91766

Phone 909 623-6944 | Fax 909 622-6267

[www.spraysystems.com](http://www.spraysystems.com)

