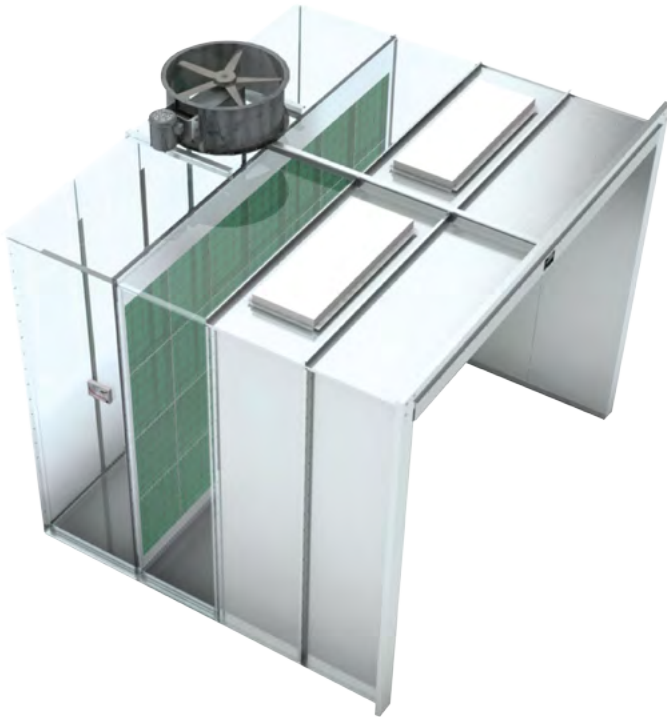


Extended Working Depths



Depending on your coating needs, facility or booth location, adding extended working depths may be essential. Customize your industrial booth by adding extension modules with all the required support stiffeners, nuts and bolts, and caulking.

5'-0" or 7'-6" deep extension modules include all required lighting.

MODEL NUMBER			PART NUMBER			SHIPPING WEIGHT		
Booth Size	I.D. Width	I.D. Height	2'-6" Extension	5'-0" Extension	7'-6" Extension	EXT. 2'-6"	EXT. 5'-0"	EXT. 7'-6"
I-585	5'-0"	7'-9"	20-1100-30	20-1100-60	20-1100-90	165	330	495
I-887	7'-6"	7'-9"	20-1101-30	20-1101-60	20-1101-90	195	390	585
I-1087	9'-6"	7'-9"	20-1102-30	20-1102-60	20-1102-90	215	430	645
I-1287	12'-0"	7'-9"	20-1103-30	20-1103-60	20-1103-90	245	490	735
I-1487	14'-0"	7'-9"	20-1104-30	20-1104-60	20-1104-90	265	530	795
I-1687	16'-0"	7'-9"	20-1105-30	20-1105-60	20-1105-90	285	570	855
I-1887	18'-0"	7'-9"	20-1106-30	20-1106-60	20-1106-90	305	610	915
I-2087	20'-0"	7'-9"	20-1107-30	20-1107-60	20-1107-90	325	650	975
I-2287	22'-0"	7'-9"	20-1108-30	20-1108-60	20-1108-90	355	710	1065
I-2487	24'-0"	7'-9"	20-1109-30	20-1109-60	20-1109-90	375	750	1125
I-8107	7'-6"	9'-9"	20-1111-30	20-1111-60	20-1111-90	215	430	645
I-10107	9'-6"	9'-9"	20-1112-30	20-1112-60	20-1112-90	235	470	705
I-12107	12'-0"	9'-9"	20-1113-30	20-1113-60	20-1113-90	265	530	795
I-14107	14'-0"	9'-9"	20-1114-30	20-1114-60	20-1114-90	285	570	855
I-16107	16'-0"	9'-9"	20-1115-30	20-1115-60	20-1115-90	305	610	915
I-18107	18'-0"	9'-9"	20-1116-30	20-1116-60	20-1116-90	325	650	975
I-20107	20'-0"	9'-9"	20-1117-30	20-1117-60	20-1117-90	355	710	1065
I-22107	22'-0"	9'-9"	20-1118-30	20-1118-60	20-1118-90	375	750	1125
I-24107	24'-0"	9'-9"	20-1119-30	20-1119-60	20-1119-90	395	790	1185
I-8127	7'-6"	11'-9"	20-1120-30	20-1120-60	20-1120-90	255	510	765
I-10127	9'-6"	11'-9"	20-1121-30	20-1121-60	20-1121-90	275	550	825
I-12127	12'-0"	11'-9"	20-1122-30	20-1122-60	20-1122-90	295	590	885
I-14127	14'-0"	11'-9"	20-1123-30	20-1123-60	20-1123-90	315	630	945
I-16127	16'-0"	11'-9"	20-1124-30	20-1124-60	20-1124-90	345	690	1035
I-18127	18'-0"	11'-9"	20-1125-30	20-1125-60	20-1125-90	365	730	1095
I-20127	20'-0"	11'-9"	20-1126-30	20-1126-60	20-1126-90	385	770	1155
I-22127	22'-0"	11'-9"	20-1127-30	20-1127-60	20-1127-90	405	810	1215
I-24127	24'-0"	11'-9"	20-1128-30	20-1128-60	20-1128-90	425	850	1275